



GUANGZHOU ZHIGUANG ELECTRIC TECHN

2 0 2 1

# CONTENTS

01





1999



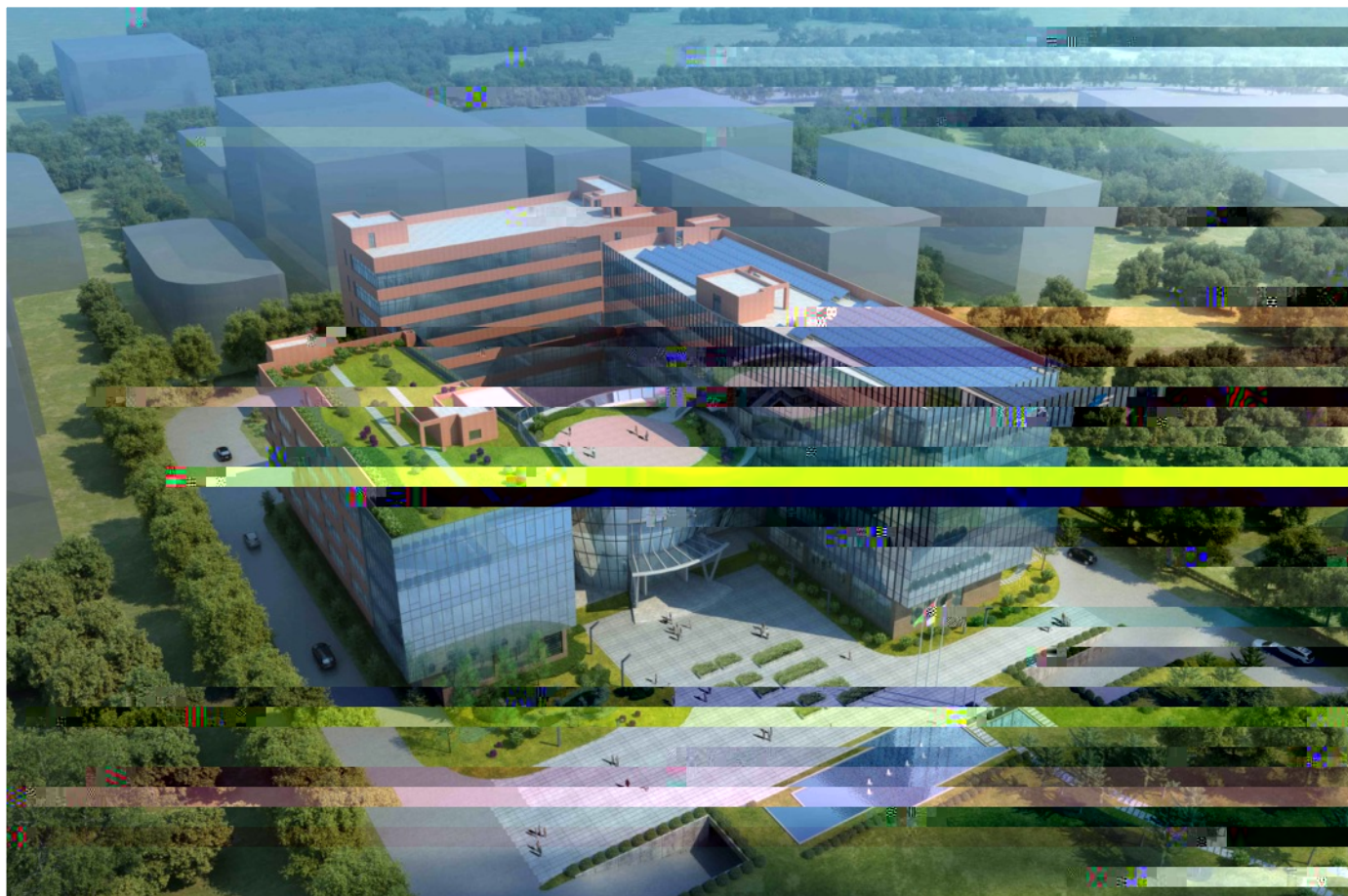
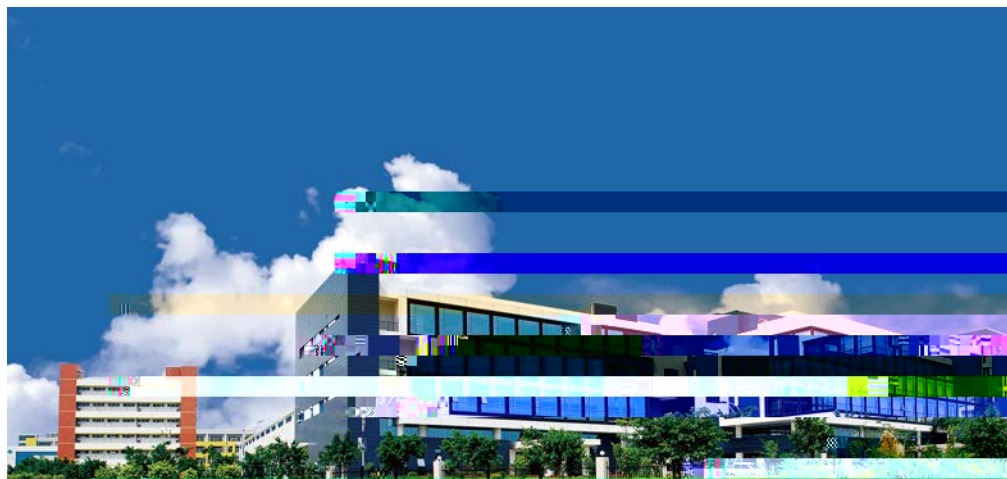
2007

002169

20

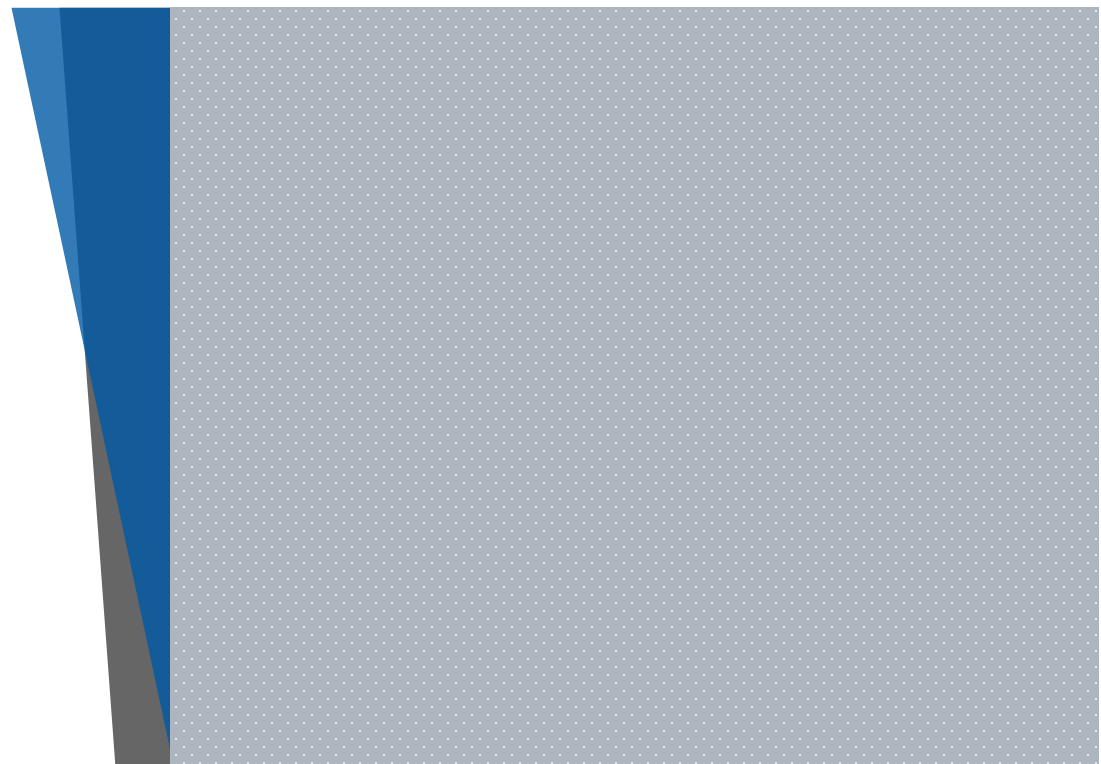
+

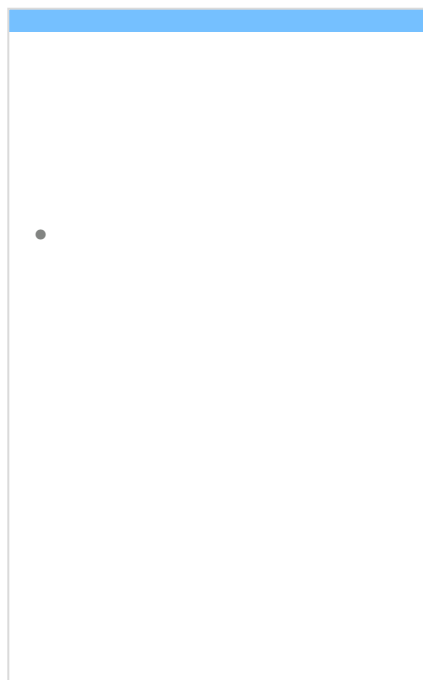
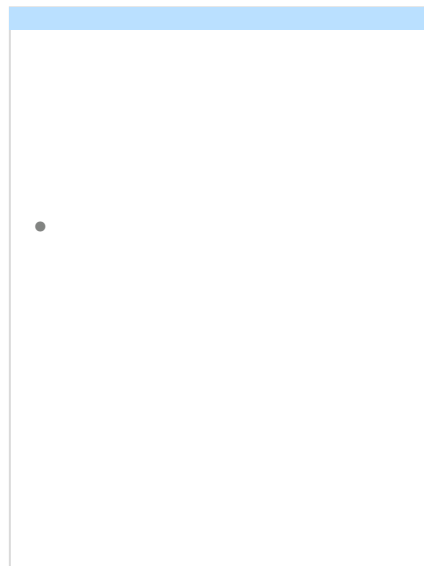
+



2002 2  
002169

/ PCS UPS SVG  
"





+

- 
- 

- 
- 
- 

- 
- 

UPS

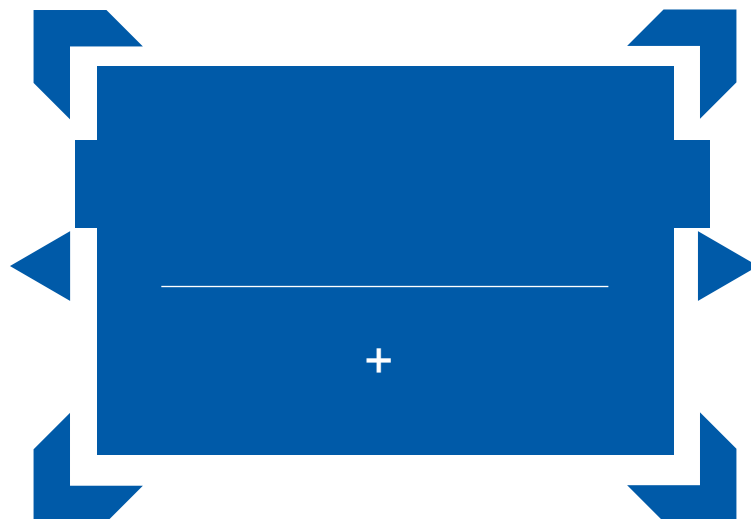
- 
- 
- 

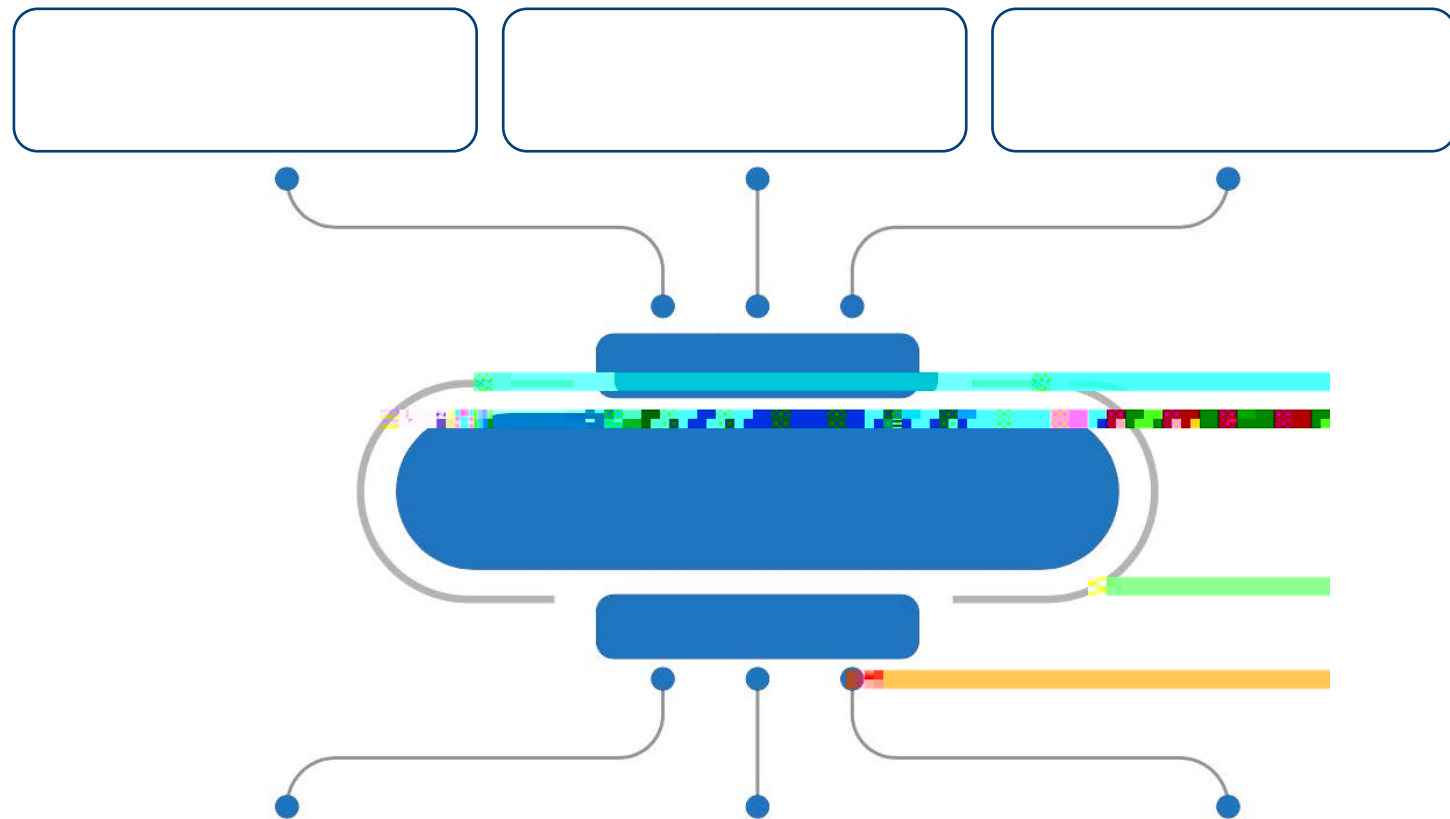
SVG

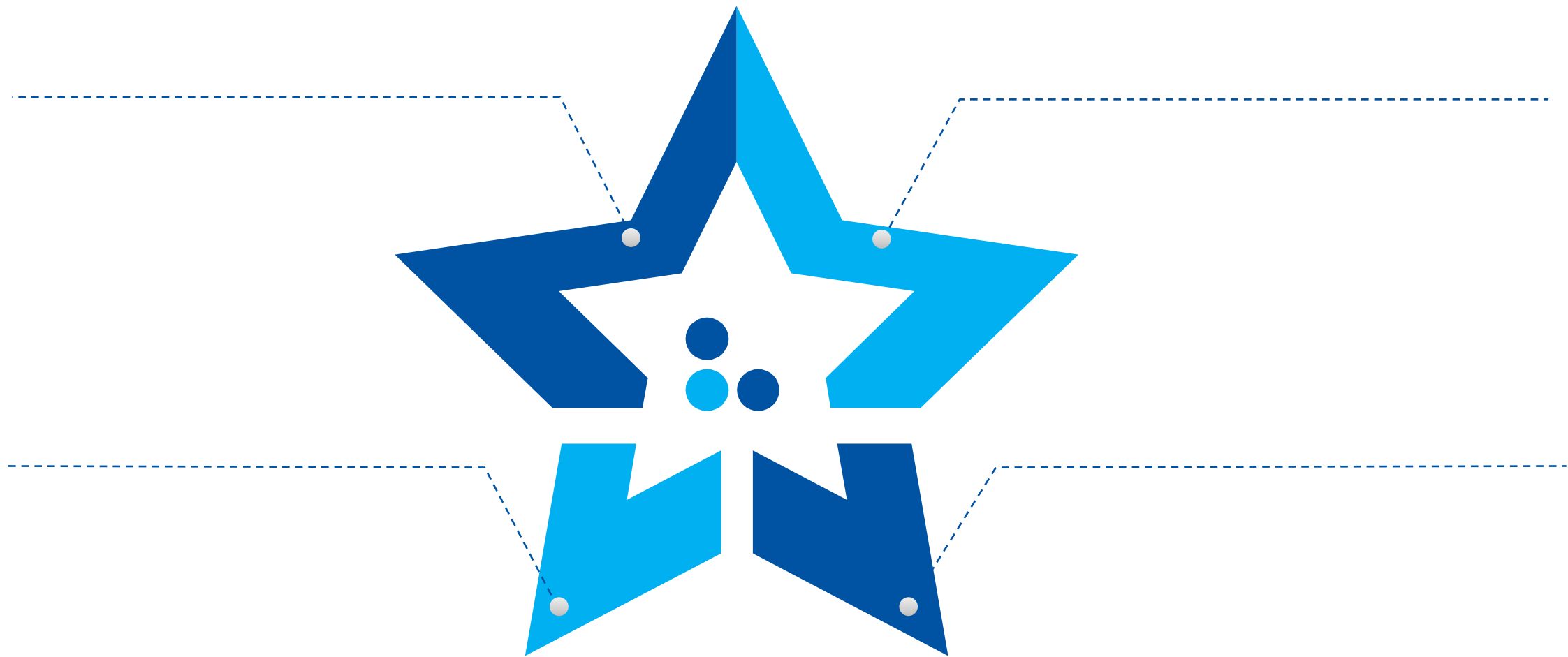
- 
- 
- 

PACK    BMS    PCS    EMS

- 
- 
- 









- 2009
- 2012
- 2013
- 2014
- 2017
- 2018
- 2018
- 2019
- 
- 
- 2019



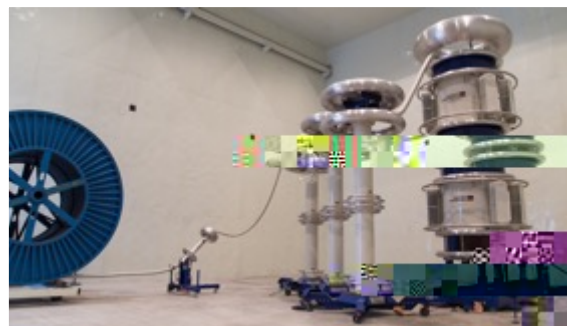
2021 7 1

450

333

333 ;

40

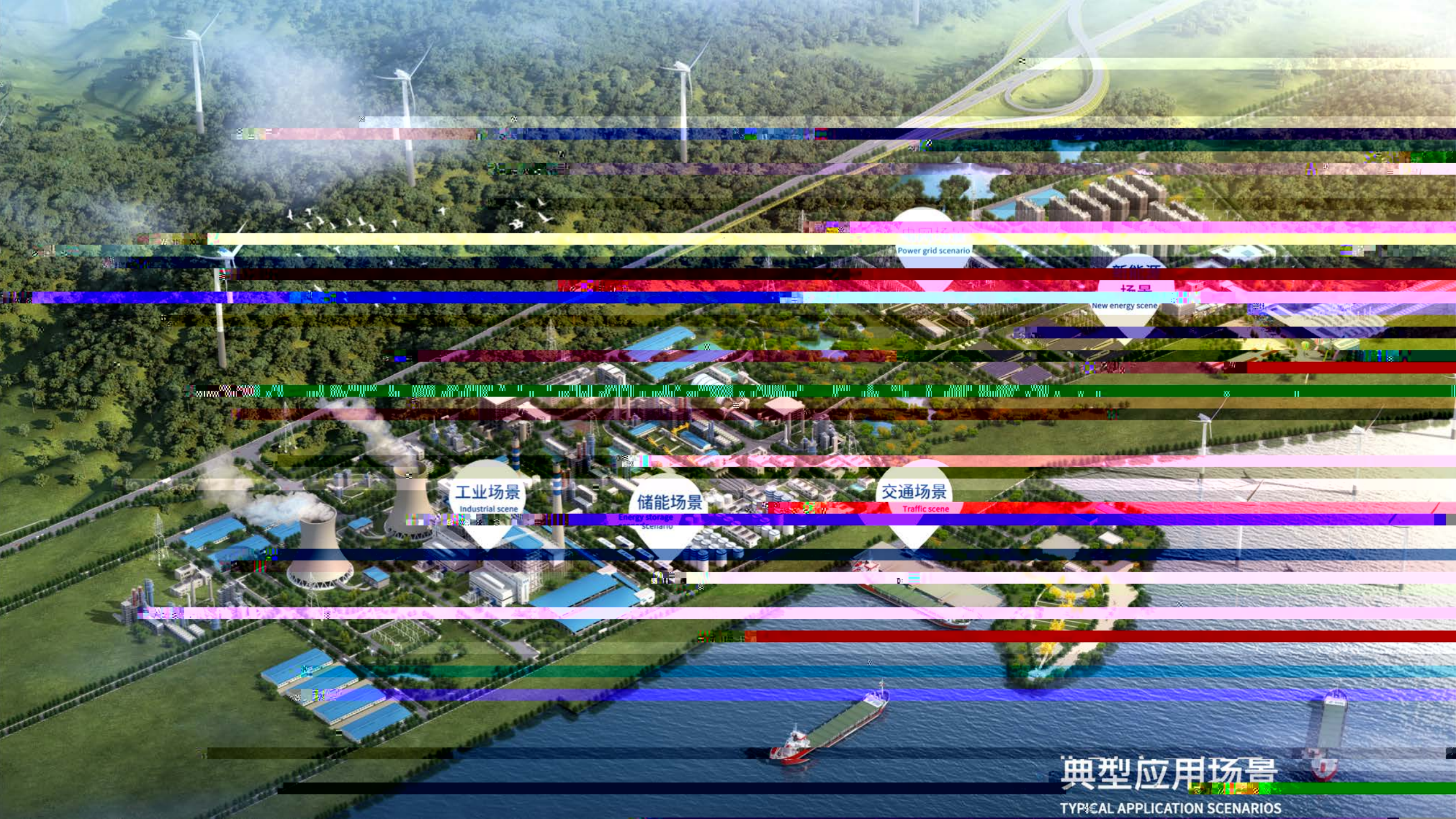


6-35kV









Power grid scenario

新能源

New energy scene

工业场景

Industrial scene

储能场景

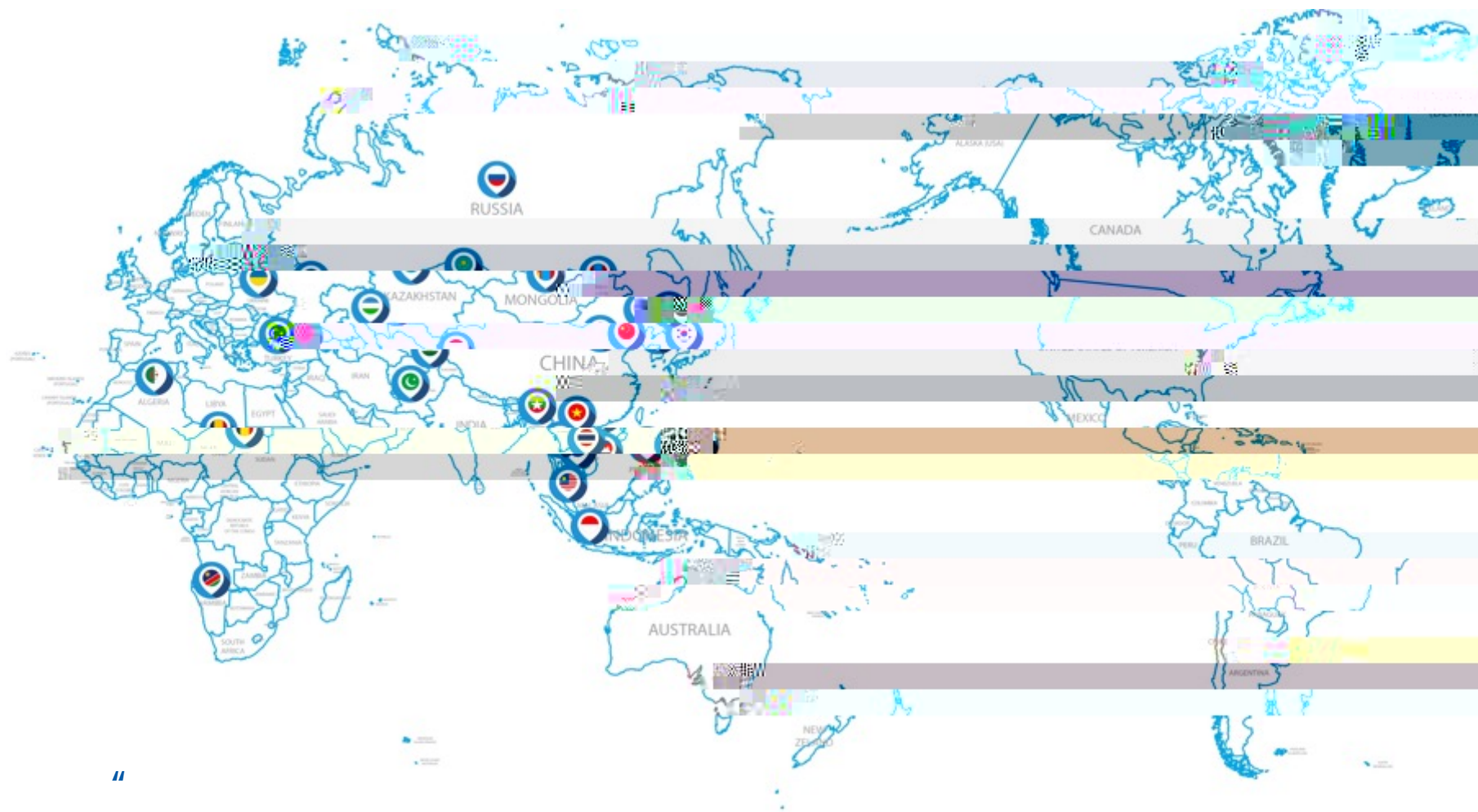
Energy storage scenario

交通场景

Traffic scene

典型应用场景

TYPICAL APPLICATION SCENARIOS



“ ”

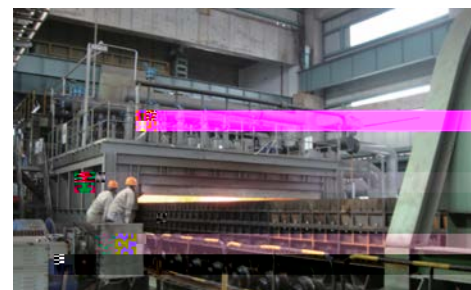
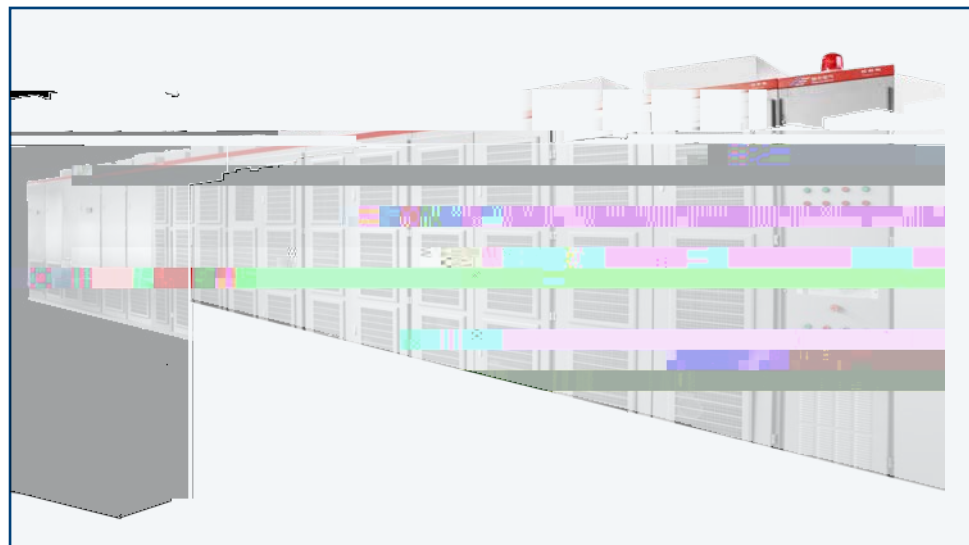
02



7000kVA~30000kVA

300MW—600MW

600MW



2x7800kW



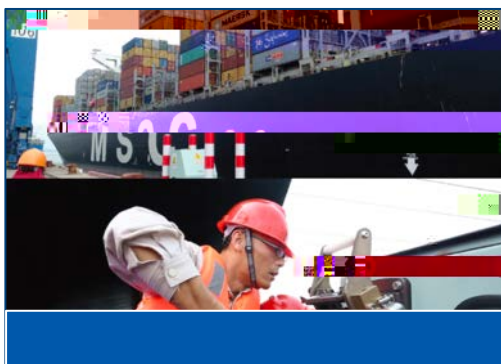
2x6300kW



ZG-SPS

ZG-SPS

0.4kV~35kV



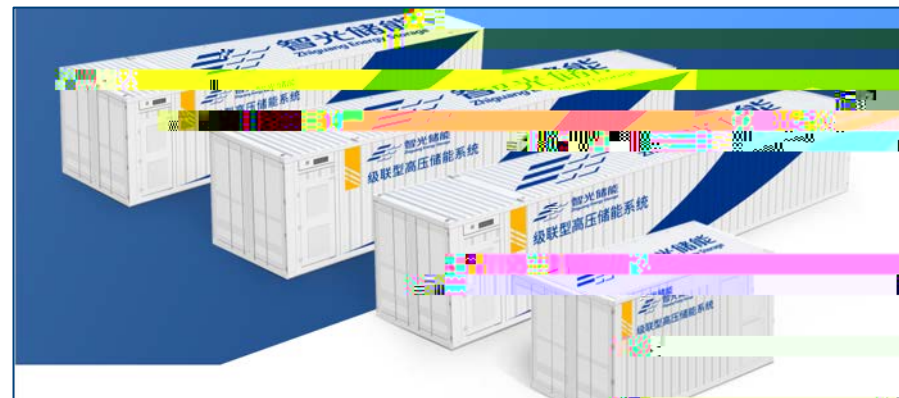


( )

( )

6-35kV

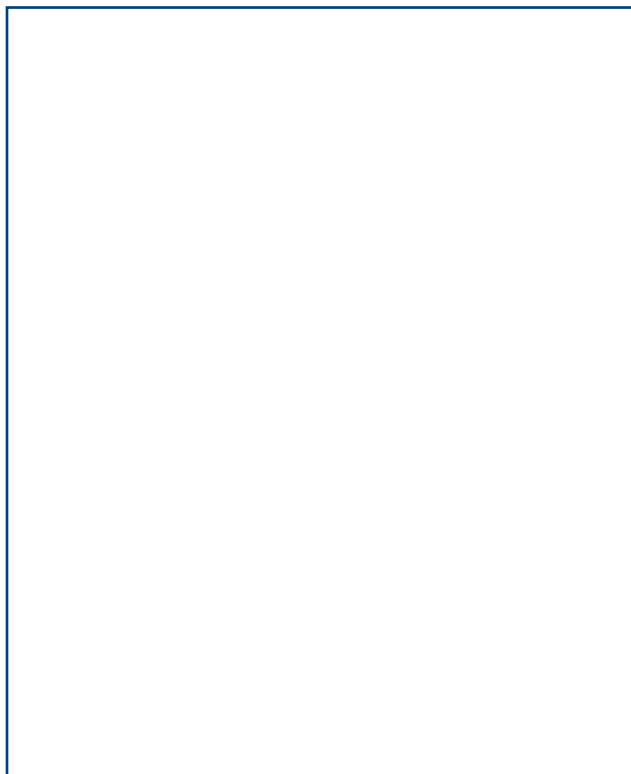
( 5MW )

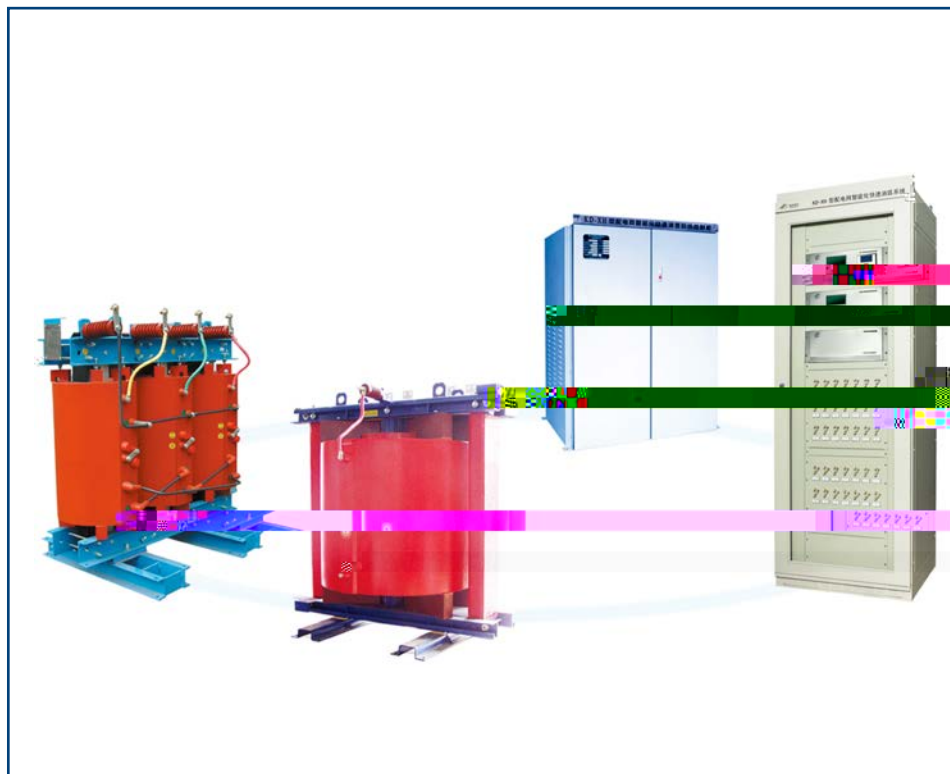


( H ) ( ;

# UPS







KD-XH

78%      260      (      333      )



10000

2008  
IEC61850(DL/T860)





## ZG-dSVC

ZG-dSVC

ZG-dSVC



# ZG-PSVG ZG-SVG

( )

( )

(SVG/SVC)

( )

(APF)



ZG-PSVG  
ZG-SVG



ZG-

03





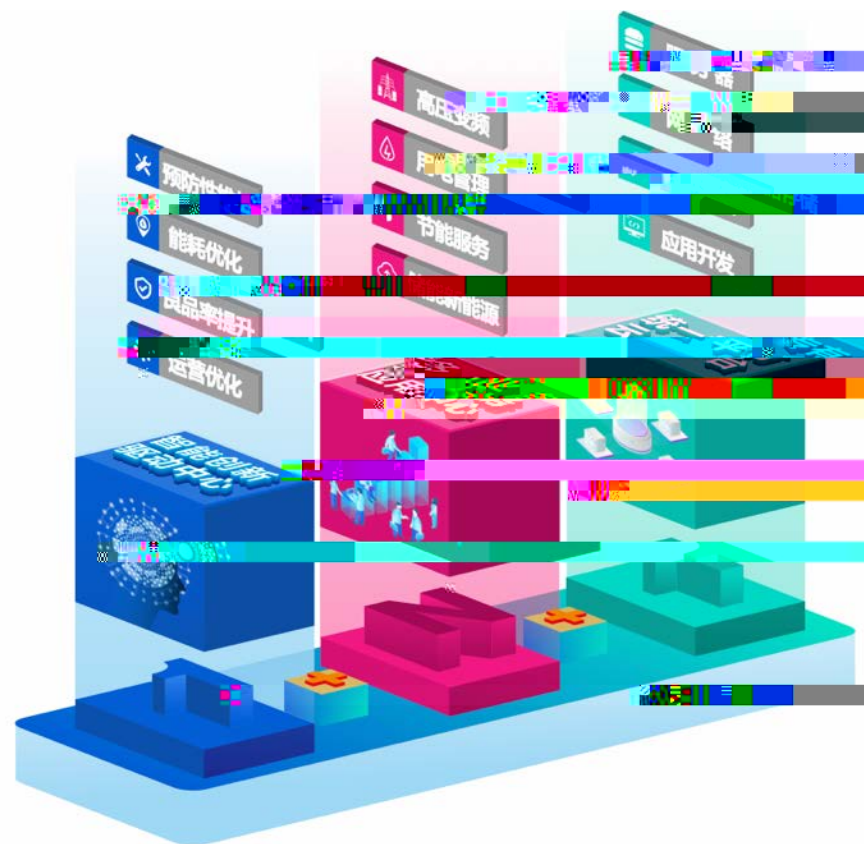
“1+N+1”

1

N

1

BI



Thanks for Your Time